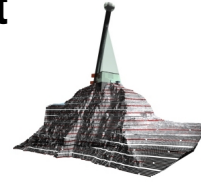


Matterhorn Glacier Paradise, Zermatt



Group 5F retained as Facade Consultant for a design study to realise an ambitious pyramid building that comprises an Hotel & restaurant on one of the highest mountains of Switzerland.

- Building height: 150m
- Location: 4478m over sea level
- Windspeed: 32 m/s top range
- Photovoltaik: total 4'200m² (pyramid) + 1'500 m²(opaque facade)
- Structure: steel & concrete
- Facade: steel / glass

